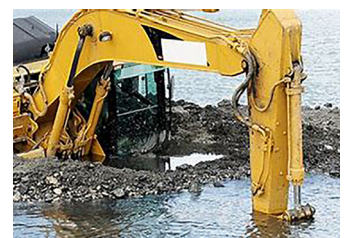
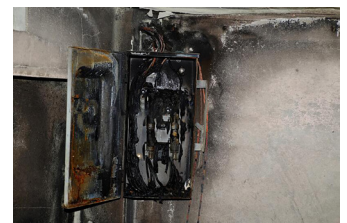
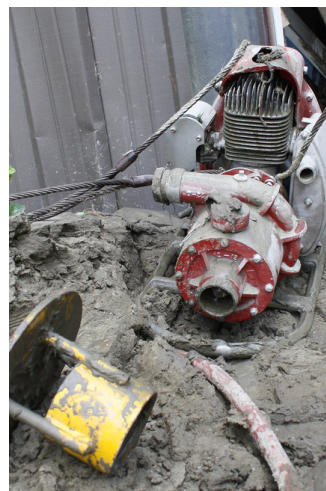


***DID YOU KNOW THAT INDUSTRIAL LOSS CONSULTANTS DID
DESK REVIEWS OF EQUIPMENT AND MACHINERY CLAIMS?***

WHEN ARE DESK REVIEWS MOST IDEAL?

- To document a claim file and justify expenditures being paid.
- To confirm whether the numbers submitted are Good, Bad, or Indifferent?
- To confirm that the repair proposal is Fair.
- To confirm that the repairs were completed at a fair price.
- To Understand repair vs. replace costs
- To understand the value of the equipment
- Determine whether the insured has incorporated betterments to the equipment compared to pre-loss condition



REQUEST A CONSULTATION

(800) 497-4030 • contact@industrialloss.com • www.industrialloss.com