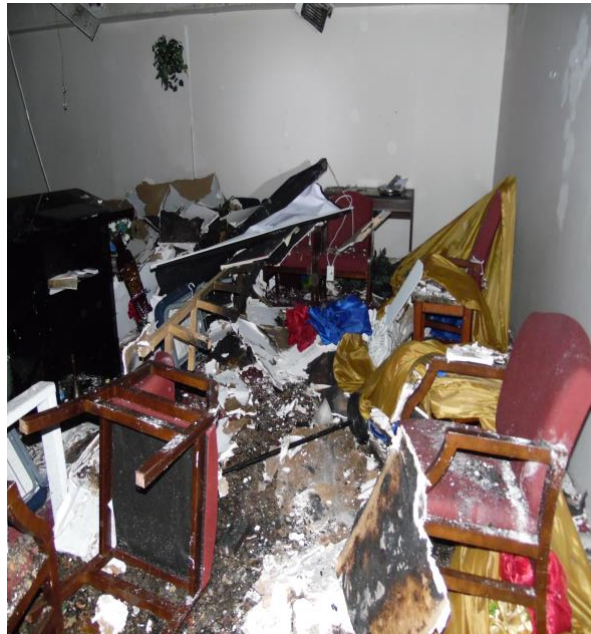


Church Musical Equipment Claim



ILC Assignment:

- Site inspection of the insured's damages to equipment and inventory of items involved in a fire.
- Determine if the affected equipment appears to be restorable to pre-loss condition or if new replacements will be required.
- If restorable, determine the scope of work to be completed, cost and timeframe.
- Provide RCV and ACV valuation for the damaged equipment.

ILC Analysis:

- ILC thoroughly inspected the various damaged equipment to determine if it was restorable to pre-loss condition.
- ILC reviewed the new equipment and submitted claim of \$170,179.43 provided by the public adjuster.
- ILC acquired new replacement quotes for \$88,748.93.
- ILC's thorough inspection of the insured's loss revealed equipment damages that were previously missed.

Summary:

- ILC determined that most of the items were destroyed and provided a price for a replacement.
- ILC provided an ACV valuation of the equipment.
- ILC saved the client a total of 81K by validating the LKQ of items destroyed.